



# TENNECT

**TENNECT**

Dieses standardisierte Befestigungssystem ermöglicht das punktförmige oder lineare Befestigen und Spannen von Flächentragwerken. Hierbei stellen sich die Anschlusselemente und dadurch die wirkenden Kräfte automatisch in Zugrichtung ein. Dieses dreidimensional einstellbare System kann somit Bautoleranzen ausgleichen, erleichtert die Montage und minimiert den Planungsaufwand. Die statisch nachgewiesenen Elemente sind in unterschiedlichen Größen erhältlich und decken einen Kräftebereich von 25 – 200 kN ab.

Produktvorteile:

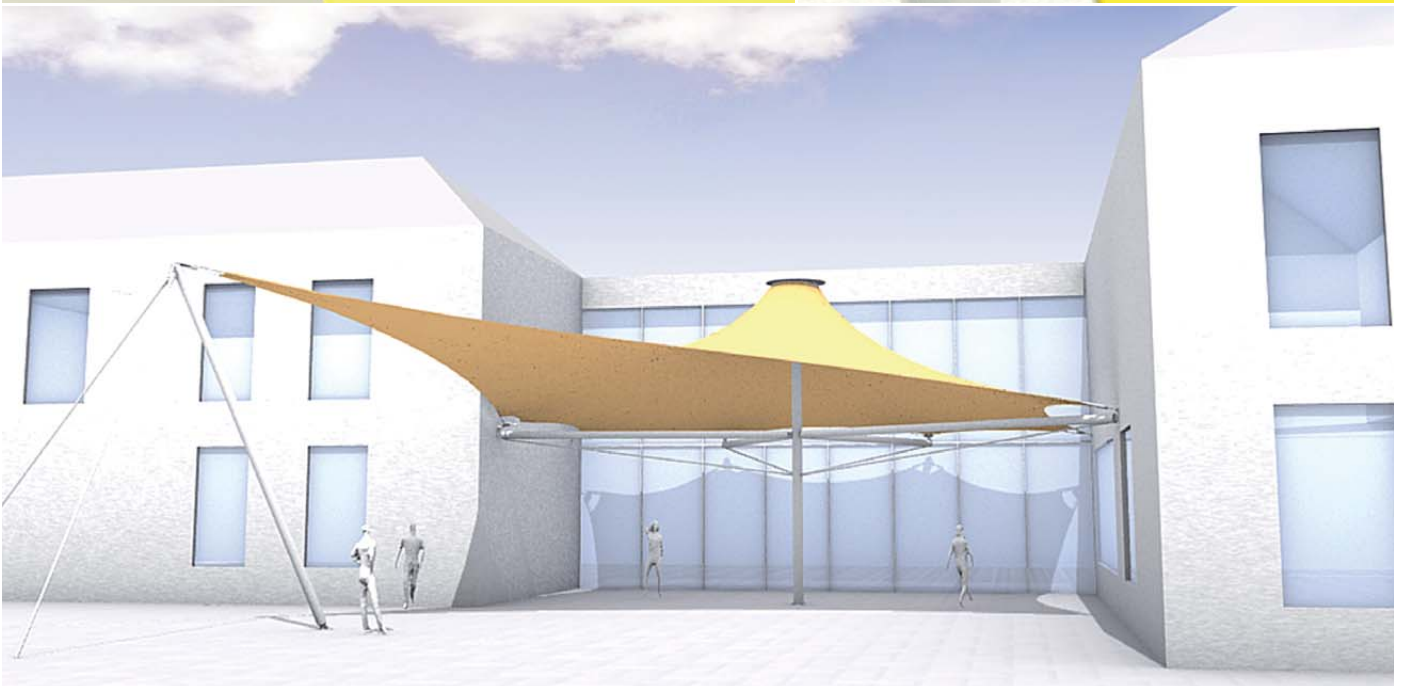
- ▶ Kräfteinleitung automatisch in Zugrichtung
- ▶ Geringer Planungsaufwand
- ▶ Ausgleich von Bautoleranzen
- ▶ Ausschreibungsfähige Systemkomponente
- ▶ Einfache Montage
- ▶ Höchste Effizienz bei geringstmöglichem Materialeinsatz

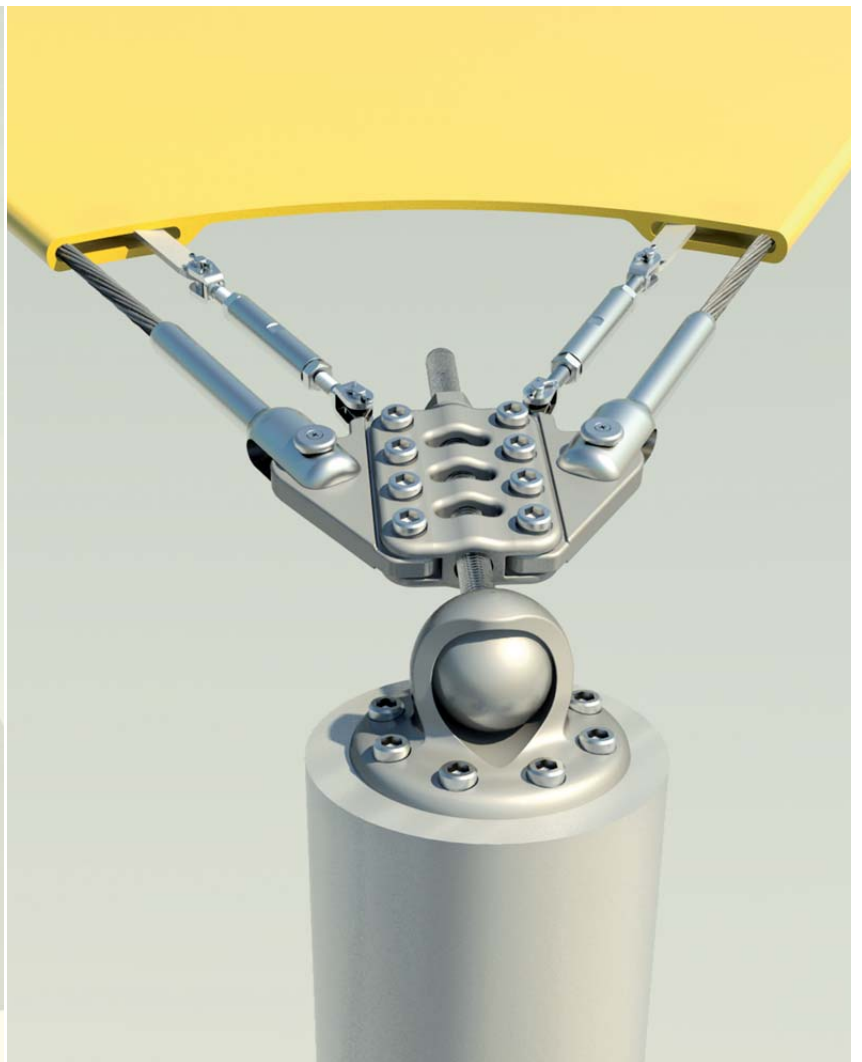
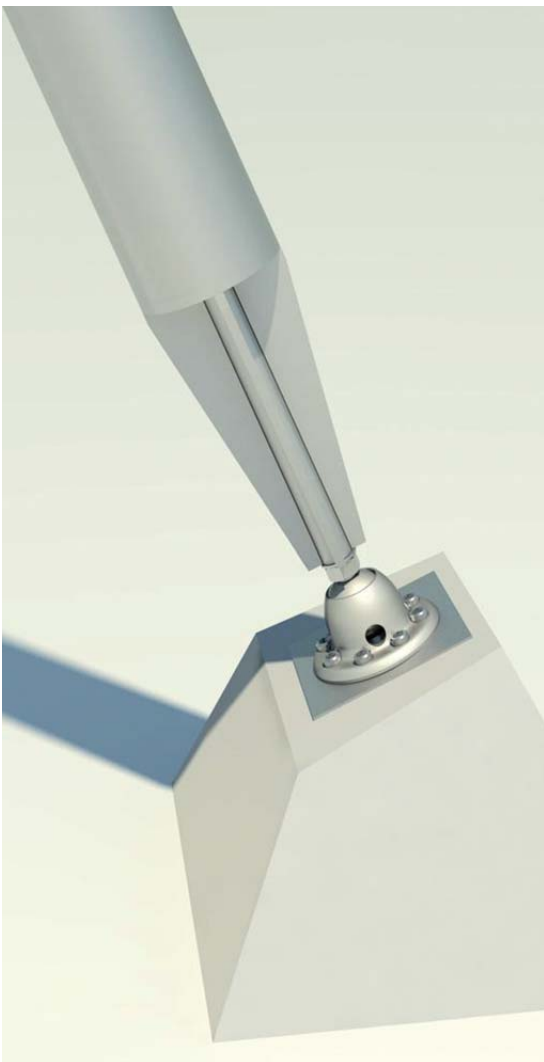
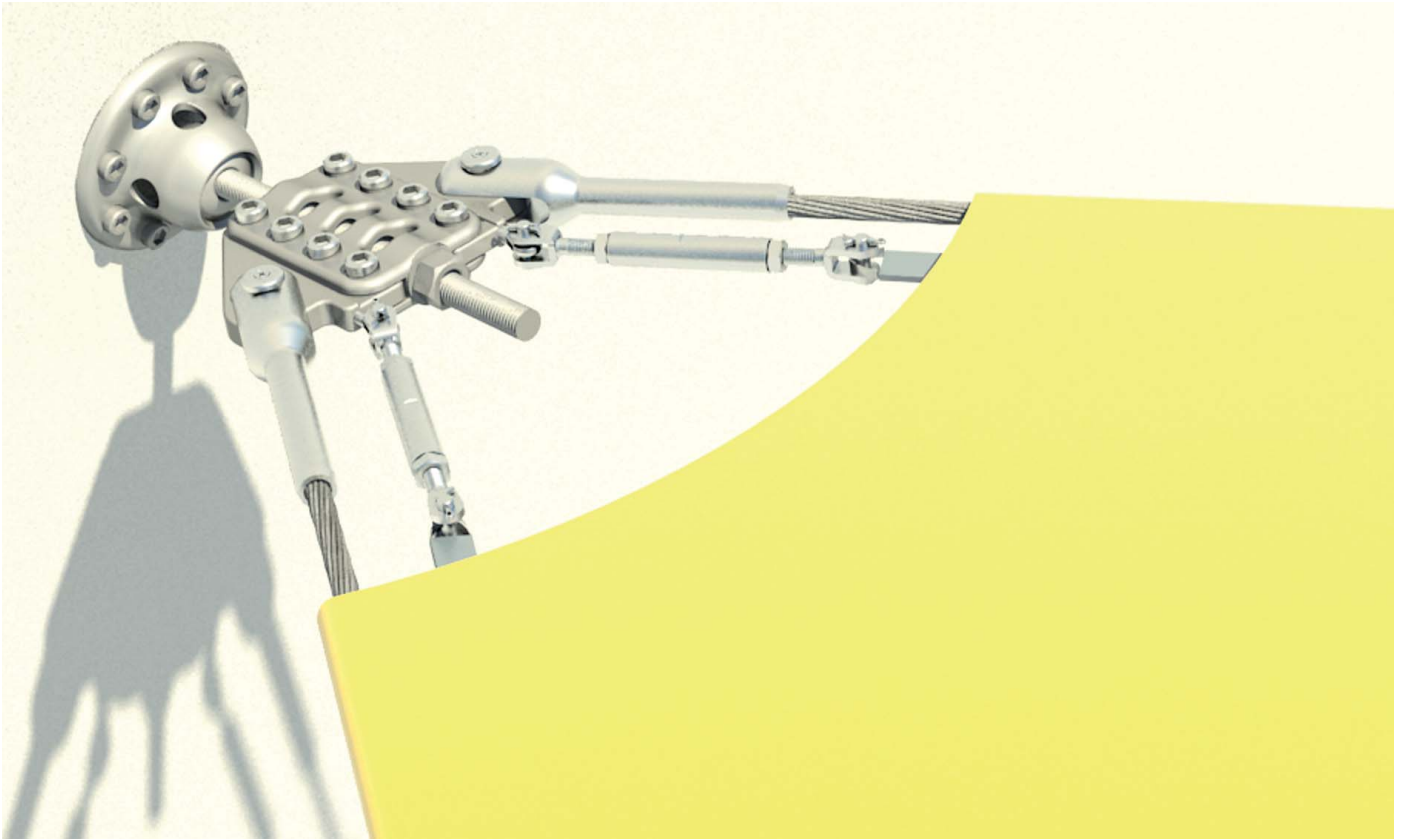
**TENNECT**

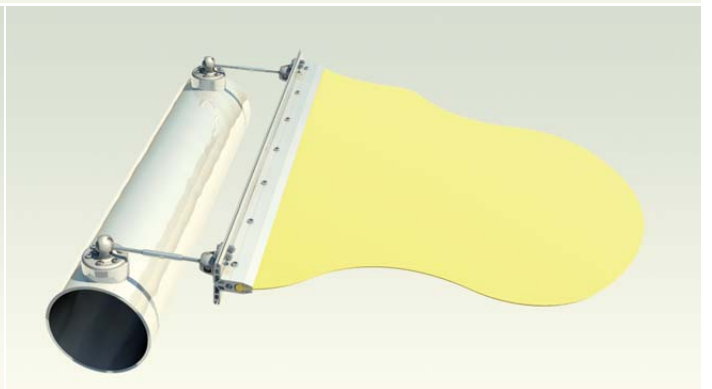
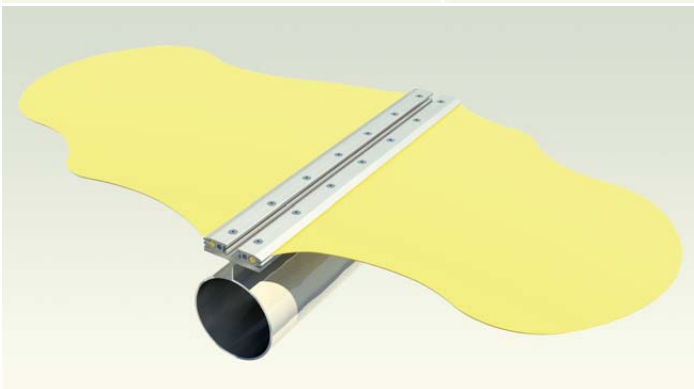
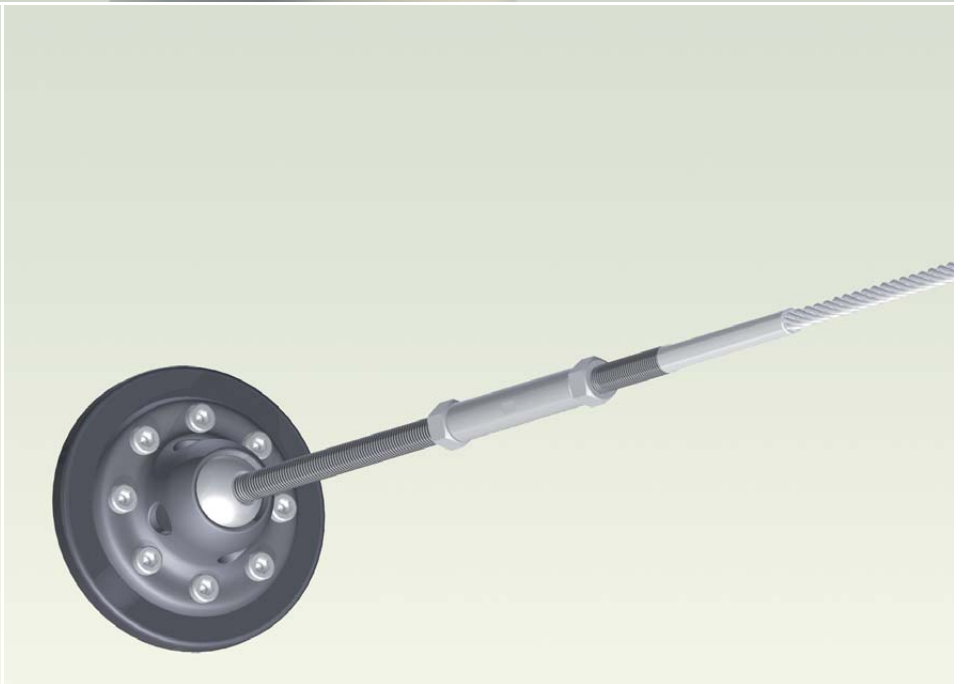
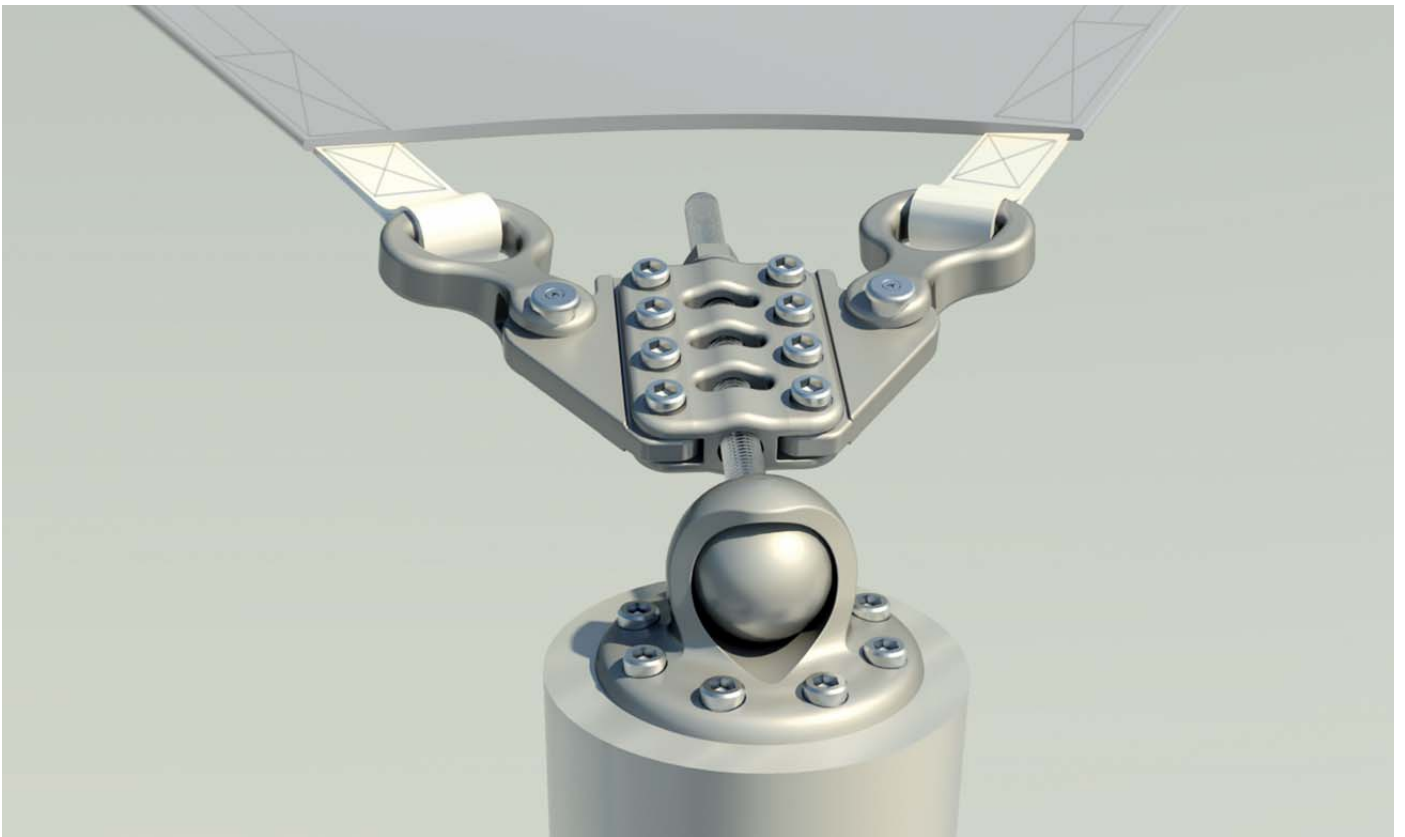
This standardised fastening system allows a point or linear fastening and tensioning of load bearing structures. The connection elements and the acting forces adjust automatically in the direction of pull. This three-dimensional adjustable system can balance dimensional tolerances, makes the installation easier and minimises the planning effort. The statically proven elements are available in different sizes and are suitable for forces from 25kN to 200kN .

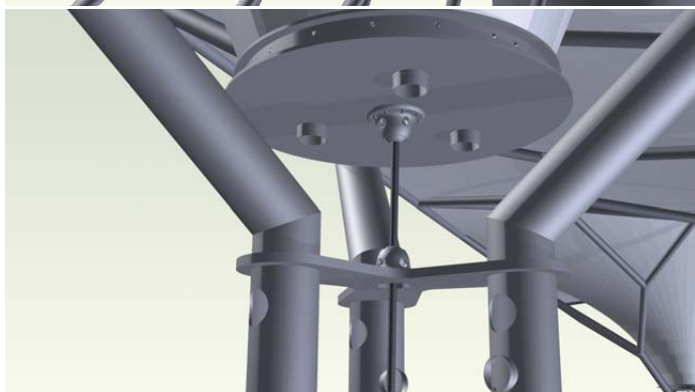
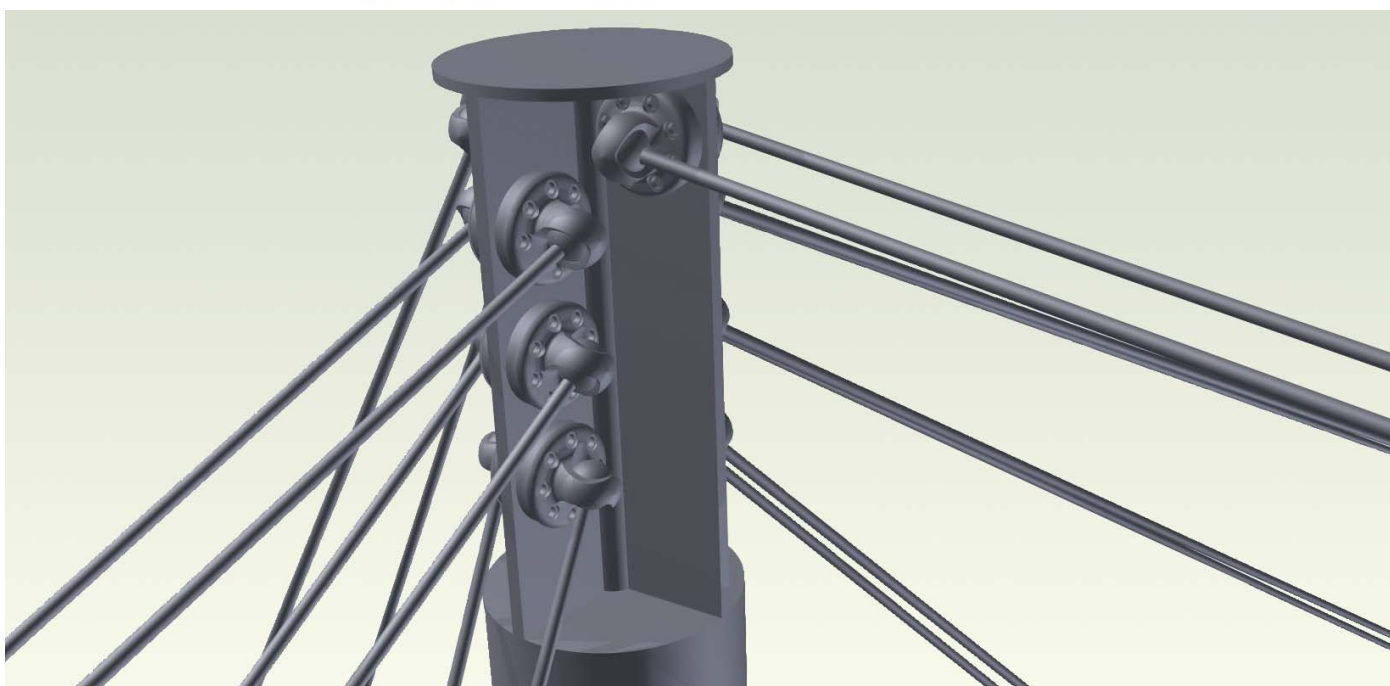
Advantages:

- ▶ Application of force is automatically adjusted in the direction of pull
- ▶ Low planning effort
- ▶ Balance of dimensional tolerances
- ▶ Approved system components
- ▶ Easy installation
- ▶ Highest efficiency at lowest material usage











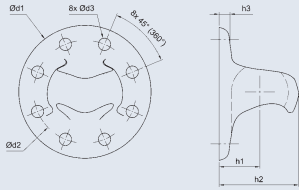
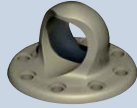
Farbcode für Nenngroße (NG) 25 kN  
Color code for nominal size (NG) 25 kN

Farbcode für Nenngroße (NG) 100 kN  
Color code for nominal size (NG) 100 kN

Farbcode für Nenngroße (NG) 200 kN  
Color code for nominal size (NG) 200 kN

NG = Bemessungswert | NG = design value

**Kugelhalter N**  
**Ball holder N**

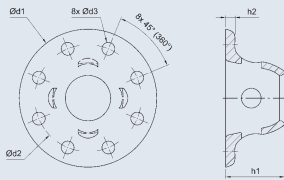


NG	Artikelnummer   Part number	Ø d1	Ø d2	Ø d3	h1	h2	h3
25	ISK-N25	92	70	9	26	51,5	6
100	ISK-N100	139,5	108	13	43	84	9,5
200	ISK-N200	189	138	21	60	114	9

Material 1.4405 Oberfläche matt glasperlengestrahlt | Surface glass bead blasted

Befestigung mit Zylinderschrauben DIN 6912 (siehe Seite 9) | Mounting with socket head screws DIN 6912 (see page 9)

**Kugelhalter W**  
**Ball holder W**

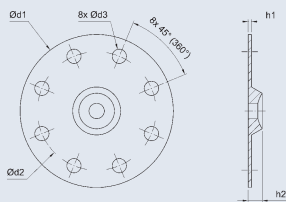
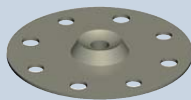


NG	Artikelnummer   Part number	Ø d1	Ø d2	Ø d3	h1	h2
25	ISK-W25	89	65	9	39	6
100	ISK-W100	139,5	108	13	60	9
200	ISK-W200	178	134	17	80	9

Material 1.4405 Oberfläche matt glasperlengestrahlt | Surface glass bead blasted

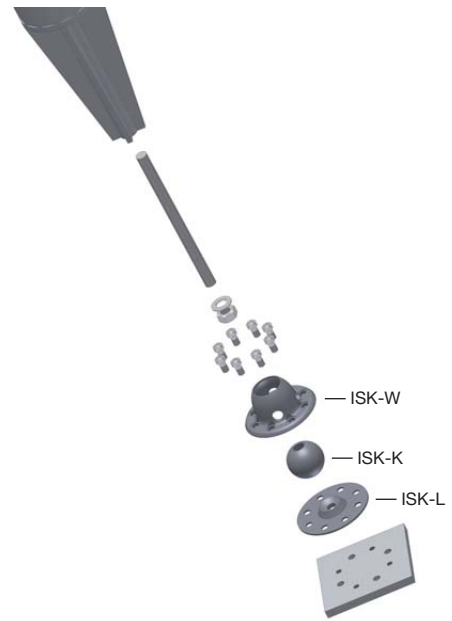
Befestigung mit Zylinderschrauben DIN 6912 (siehe Seite 9) | Mounting with socket head screws DIN 6912 (see page 9)

**Kugel-Gegenplatte**  
**Ball-counterplate**

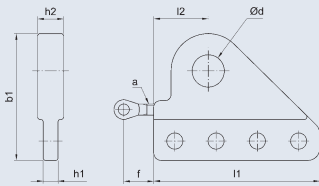
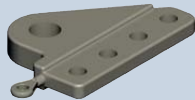


NG	Artikelnummer   Part number	Ø d1	Ø d2	Ø d3	h1	h2
25	ISK-L25	89	65	9	3	10,2
100	ISK-L100	139,5	108	13	3	12,6
200	ISK-L200	178	134	17	4	18,5

Material 1.4405 Oberfläche matt glasperlengestrahlt | Surface glass bead blasted



**Gabelanschlussplatte  
Fork plate**

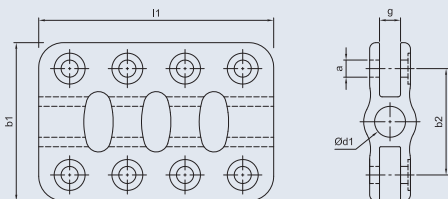
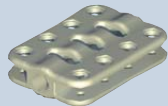


NG	Artikelnummer   Part number	a	b1	Ø d	f	h1	h2	l1	l2
25	ISK-F25-S6	M6	51	10	26	8	9	75	25
25	ISK-F25-S8	M6	59	12	24	8	11	75	25
100	ISK-F100-S10	M8	80	16	33,5	12	13	134	44
100	ISK-F100-S12	M8	87	20	33,5	12	16	134	44
100	ISK-F100-S14	M8	95	23	33,5	12	19	134	44
100	ISK-F100-S16	M10	102	26	33,5	12	21	134	44
200	ISK-F200-S16	M10	115	26	45	16	21	190	60
200	ISK-F200-S18	M10	129	29	45	16	26	190	60
200	ISK-F200-S22	M12	136	33	45	16	28	190	65
200	ISK-F200-S26	M12	146	36	45	16	30	190	70

Material 1.4405

Oberfläche matt glasperlengestrahlt | Surface glass bead blasted

**Axial-Konsole  
Axial bracket**

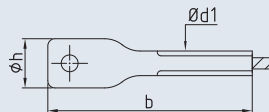
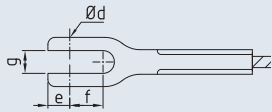


NG	Artikelnummer   Part number	a	b1	b2	Ø d1	g	l1
25	ISK-A25	M8	58	40	11	9	75
100	ISK-A100	M12	96	66	21	13	134
200	ISK-A200	M16	128	86	25	17	190

Material 1.4405

Inkl. Zylinderschrauben | socket head screws included  
Oberfläche matt glasperlengestrahlt | Surface glass bead blasted

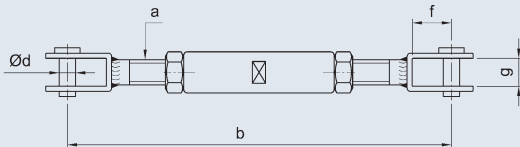
**Beide Seiten Gabelfitting aufgewalzt**  
**Both sides fork roll swaged**



NG	Artikelnummer   Part number	Ø Seil   Ø rope	b	Ø d	Ø d1	e	f	g	h
25	607-0600	6	116	10	12,5	14	18	10	22
25	607-0800	8	151	12	16,1	16	24	12	28
100	607-1000	10	185	16	17,8	20	29	14	34
100	607-1200	12	220	20	21,4	25	35	17	41
100	607-1400	14	238	23	24,9	28	41	20	48
100   200	607-1600	16	286	26	28	33	48	22	54,5
200	607-1800	18	335	29	34,5	38	53	28	69,5
200	607-2200	22	379	33	43	40	61	30	72
200	607-2600	26	445	36	45,9	45	71	33	83

Material 1.4401 Oberfläche matt poliert | Surface satin polished  
 Europa-Zulassung ETA-10/0358 erteilt | European Technical Approval ETA-10/0358 granted

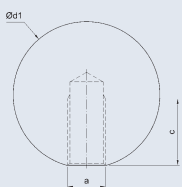
**Spannschloss mit Gabel**  
**Turnbuckle with fork**



NG	Artikelnummer   Part number	a	b	Ø d	f	g	Spannweg   Adjustment
25	ISK-8712-060	M6	180	5	12	7,5	+20   -44
100	ISK-8712-080	M8	214	6	13	10	+30   -50
100   200	ISK-8712-100	M10	238	8	15	11	+30   -56
200	ISK-8712-120	M12	308	12	25	14	+34   -70

Material 1.4401

**Kugel mit Innengewinde**  
**Ball with internal thread**



NG	Artikelnummer   Part number	a	c	Ø d
25	ISK-K25	M10	17	38
100	ISK-K100	M20	26	60
200	ISK-K200	M24	28	88

Material 1.4405 Oberfläche matt glasperlengestrahlt | Surface glass bead blasted

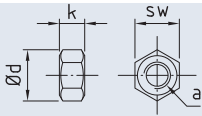
**Gewindestange**  
**Threaded rod**



NG	Artikelnummer   Part number	a	c
25	ISK-T25	M10	250
25	ISK-T25-1	M10	390
100	ISK-T100	M20	330
100	ISK-T100-1	M20	490
200	ISK-T200	M24	440
200	ISK-T200-1	M24	580

Material 1.4401 Zugfestigkeit | Tensile strength 800 N/mm<sup>2</sup>

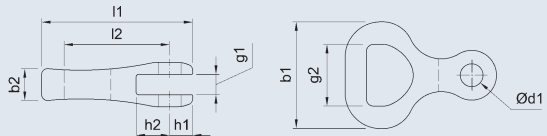
**Sechskantmutter  
Hexagon nut**



NG	Artikelnummer   Part number	a	d	k	sw
25	892-1000	M10	18,9	8	17
100	892-2000	M20	33,5	16	30
200	892-2400	M24	39,5	19	36

Material 1.4401

**Gurthalter S12  
Belt holder S12**

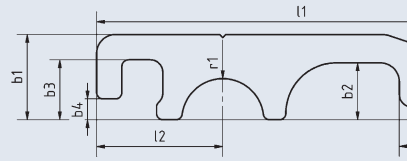
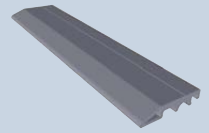


NG	Artikelnummer   Part number	b1	b2	Ød1	g1	g2	h1	h2	l1	l2
100	ISK-G-S12	90	26,7	20,1	17	52	20	28	128	90

Material 1.4405

Oberfläche matt glasperlengestrahlt | Surface glass bead blasted

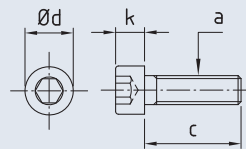
**Kederschiene AW6060 T6, 3 mtr  
Welt section AW6060 T6, 3 mtr.**



Artikelnummer   Part number	l1	l2	l3	b1	b2	b3	b4	b5	r1
ISK-PF3000	65	20	17	13,5	9	9,5	3,2	2	6,5

Material AW6060 T6, Oberfläche unbearbeitet | Surface unmachined

**Zylinderschraube  
Socket head screw**

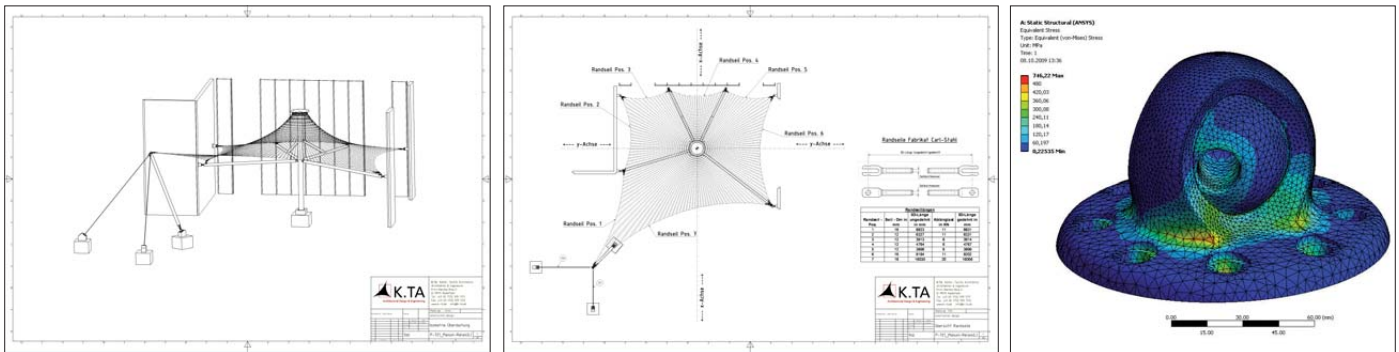


Artikelnummer   Part number	a	c	Ød	k
ISK-S0820	M8	20	13	5
ISK-S1025	M10	25	16	6,5
ISK-S1230	M12	30	18	8
ISK-S1635	M16	35	24	10
ISK-S2040	M20	40	30	12
ISK-S2045	M20	45	30	12
ISK-S2450	M24	50	36	14

Material 1.4301, Ausführung nach DIN 6912

Construction according to DIN 6912





**Carl Stahl Planungskompetenz**

Die Firma Carl Stahl ist ein weltweit führender Hersteller von Seil-systemen für architektonische und konstruktive Anwendungen. Unser Leistungspaket umfasst Planung, Statik, Lieferung und Montage.

Für die Umsetzung in die Praxis sorgen erprobte Fertigungsprozesse sowie die qualifizierte Koordination und Projektleitung durch unser Technik-Team.

Carl Stahl Leistungsumfang:

- ▶ Planung
- ▶ Statik
- ▶ Lieferung
- ▶ Montage
- ▶ Schulung

**Carl Stahl Planning Capability**

Carl Stahl is one of the leading manufacturers of cable systems for architectural and constructional applications. Our service package includes planning, static analysis, delivery and installation.

Proven manufacturing processes as well as qualified coordination and project management through our engineering department ensures realisation.

Carl Stahl scope of supply:

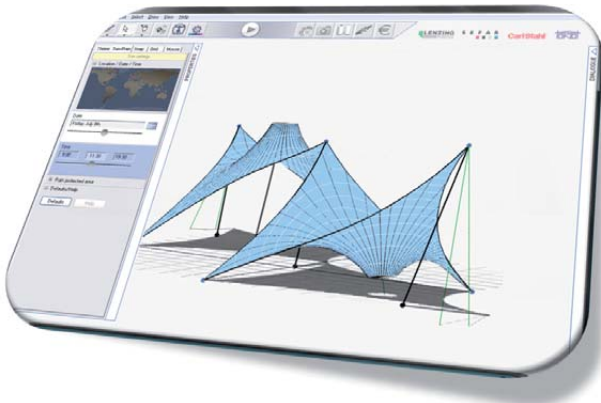
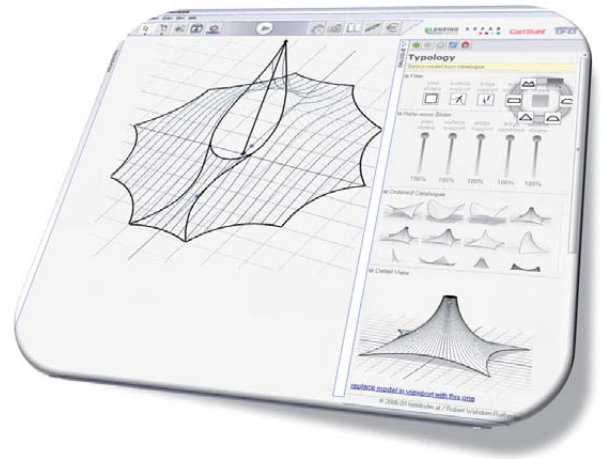
- ▶ Planning
- ▶ Static analysis
- ▶ Delivery
- ▶ Installation
- ▶ Training

Das Unternehmen Carl Stahl ist zertifiziert nach DIN EN ISO 9001:2000 und DIN EN ISO 14001:2004.

The Carl Stahl Company is certified according to DIN EN ISO 9001:2000 and DIN EN ISO 14001:2004.



# formfinder



Die TENNECT Komponenten sind in der Software „formfinder“ integriert und ermöglichen Ihnen dadurch eine schnellere und komfortablere Planung.

The TENNECT components are integrated in the „formfinder“ software and allows a fast and more comfortable planning.

- |  |   |
|--|---|
| <ul style="list-style-type: none"> <li>▶ CAD-Zeichnungen</li> <li>▶ Zulassungen</li> <li>▶ Planungsinformationen</li> <li>▶ Montagehinweise</li> <li>▶ News</li> </ul> <p>zum Download unter:<br/><a href="http://www.tennect.com">www.tennect.com</a></p> | <ul style="list-style-type: none"> <li>▶ CAD-drawings</li> <li>▶ General approvals</li> <li>▶ Planning information</li> <li>▶ Instruction for installation</li> <li>▶ News</li> </ul> <p>for download under:<br/><a href="http://www.tennect.com">www.tennect.com</a></p> |
|--|---|

